



easy detect
Fire Security Products

Ref. 553520001
250703

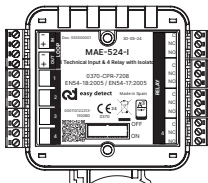
EN

Quick guide

Input/output module

1. Introduction

The modules have relay outputs and inputs to actuate and monitor other systems or devices.

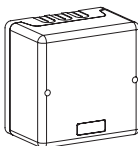
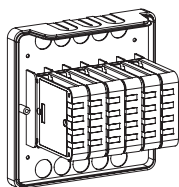
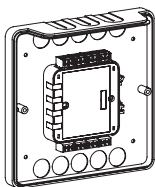


Module 1 in	MAE-501 / MAE-501-I
Module 2 in	MAE-502 / MAE-502-I
Module 4 in	MAE-504 / MAE-504-I
Module 1 out	MAE-511 / MAE-511-I
Module 2 out	MAE-512 / MAE-512-I
Module 4 out	MAE-514 / MAE-514-I
Module 1 in 1 out	MAE-521 / MAE-521-I
Module 2 in 2 out	MAE-522 / MAE-522-I
Module 4 in 4 out	MAE-524 / MAE-524-I

Input/output modules have an isolator if the reference number ends in I.

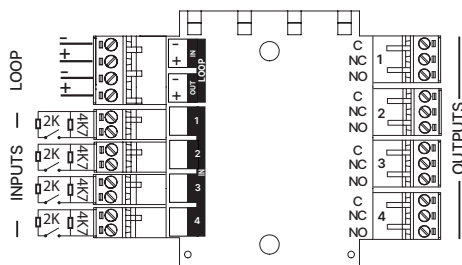
2. Installation

Any module can be installed inside a ONE BOX enclosure (with screws) or SIX BOX enclosure (with DIN rail).



The fire protection system must be connected according to the following wiring diagram, always with the power supply disconnected.

Wiring



Inputs

The input idle mode is configured using sectors 1 and 2 (see table).

1	2	Modo de funcionamiento en reposo
OFF	OFF	Supervised normally open input. E.O.L. 4 k / Alarm 2 k.
OFF	ON	Supervised normally closed input. E.O.L. 4 k / Alarm 2 k
ON	OFF	Normally open
ON	ON	Normally closed

Outputs

Each relay output has free C, NO, and NC contacts available.

Addressing

The module is part of the analogue system, and requires addressing so that it can be identified by the alarm control panel.

They can be numbered from 1 to 250 using the PGE-100 programmer and occupy a number of consecutive addresses in the loop equal to the sum of their inputs and outputs.

For numbering, insert the programmer cable into the module via the LOOP IN connector.

3. Testing and maintenance

Module maintenance consists of performing a visual inspection of the modules to check their condition, as well as functional testing of all monitoring systems and outputs.

4. Technical characteristics

Module	Working voltage: 31 to 40 VDC Consumption on standby: <300 µA Consumption during alarm: <4 mA Type: A-INDOOR USE
Wiring	2 × 1.5 mm ² twisted pair and shielded
Environment	Working temperature: From -10°C to 40°C Relative humidity: 95% non-condensing IP rating: IP40
Physical characteristics	Dimensions: 105×92×22 Material: ABS
Certification	EN54-18 / EN54-17

For detailed characteristics, scan the following QR code.





easy detect

Fire Security Products

Ref. 553520001
250703

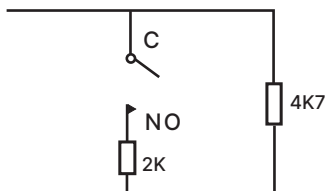
EN

Quick guide

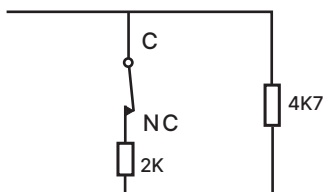
Input/output module

Entry configuration

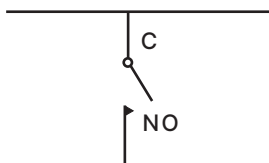
(NO) Contact with monitoring



(NC) Contact with monitoring



(NO) Contact without monitoring



(NO) Contact without monitoring

